



TK International  
020 7794 8700  
www.t-k.co.uk

Residential Sales  
Residential Lettings  
Property Management

Sales Office:  
9 Heath Street  
Hampstead  
London NW3 6TP  
E: sales@t-k.co.uk

Lettings Office:  
16-18 Heath Street  
Hampstead  
London NW3 6TE  
E: lettings@t-k.co.uk

 tk.international  
 TK International  
 TK International

Est.  
1998



## Hanover Terrace Regent's Park NW1

AVAILABLE FOR SHORT OR LONG LET.

A magnificent and rarely available Nash period home, arranged over five floors with the added benefit of a private garden and separate mews house perfect for staff or guests.

The Property is situated adjacent to, and enjoys views over, Regents Park. The accommodation comprises: 5 bedrooms, four bathrooms, four reception rooms, a sauna and gym, private landscaped garden, double garage and the one bedroom mews house.

Set on the outer circle of Regents Park, this property is ideally located for the amenities of the West End, Baker Street and St John Wood.

**£17,500 Per Week**

**SOLE AGENT**









First Floor

**Hanover Terrace, NW1**

Gross internal area (approx.)  
 450 Sq m (4849 Sq ft) Including Vaults  
 421 Sq m (4533 Sq ft) Excluding Vaults  
 Figures exclude Mews



**Mews**

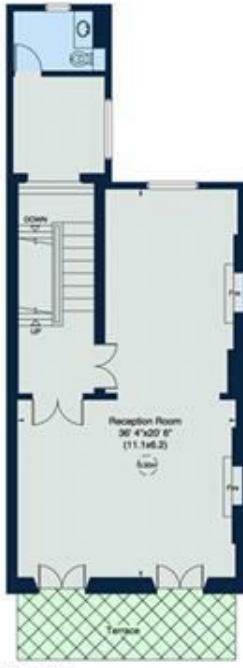
Gross internal area  
 102 Sq m (1103)

For identification only. Not to Scale

Floor Plan by capital group 200 8071 7722



Ground Floor



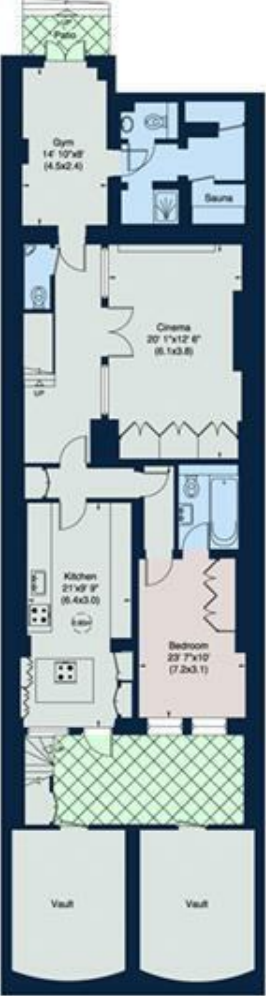
First Floor



Third Floor



Second Floor



Lower Ground Floor